

# SCRIBBLE FACE

Scribble Face art has become a very effective way of drawing portraits. You can start by lightly plotting out an outline of a face, then filling it slowly in. Alternatively, you can start with a dark area such as the eye sockets (fig 1) and slowly scribble very small circles to build up the effect. Or you might prefer to do some more Bonkers looking faces like the one below! Have a go! When you have finished, photograph it and send it back on the link you got this on...so I can print it and put it in your sketchbook

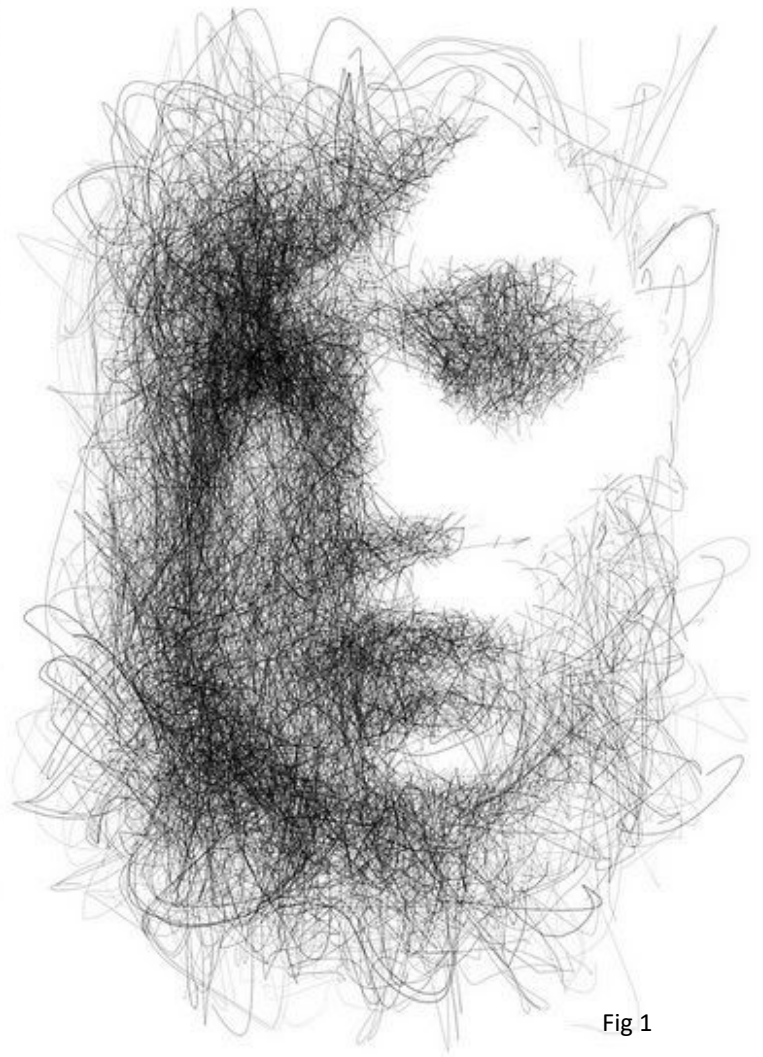
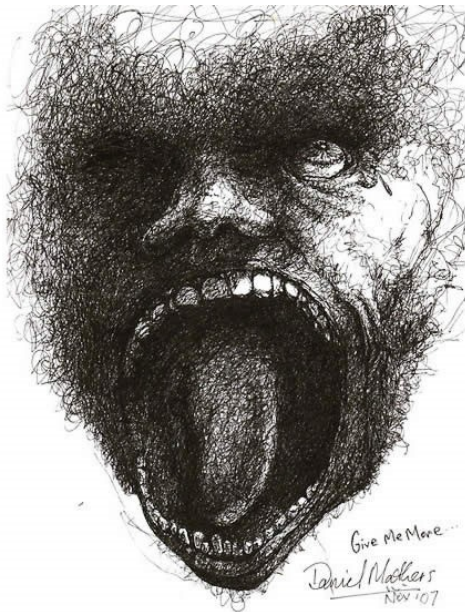
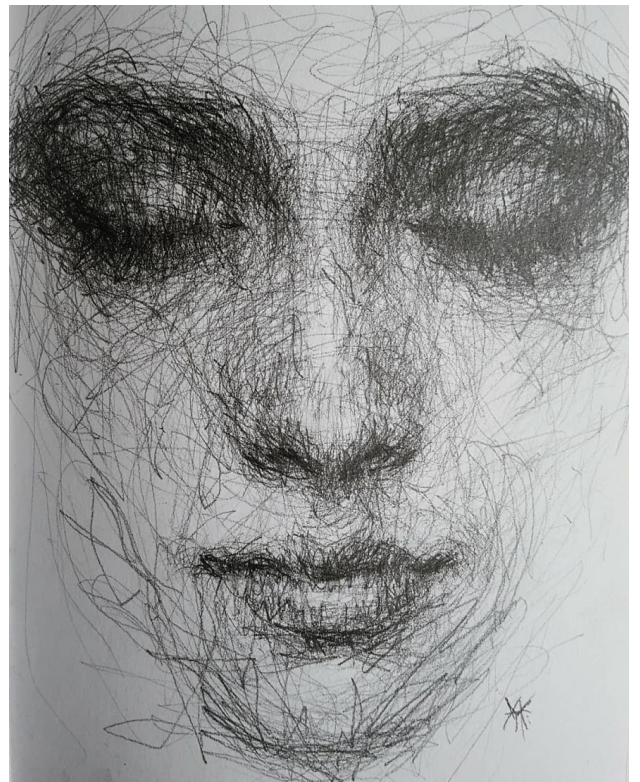


Fig 1