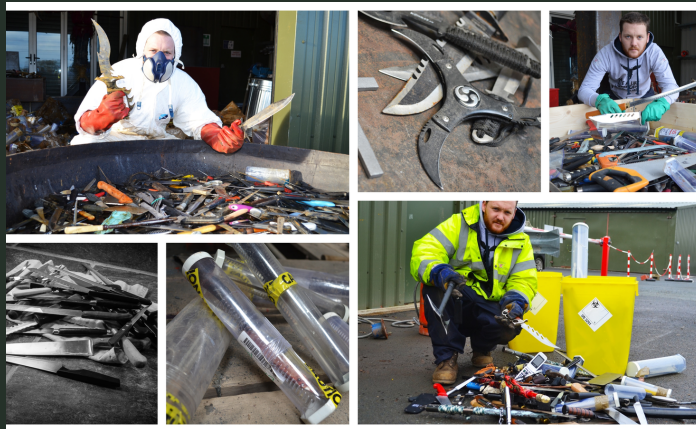


## Where did the knives come from?

The sculpture is made of 100,000 bladed instruments (flick knives, pen knives, machetes, samurai swords, kitchen knives) collected in knife amnesties by all 43 UK police forces. All have been sterilised and blunted. Sculptor Alfie Bradley created the Knife Angel along with the British Ironworks Industry in Shropshire. Various cities and towns have been hosting the sculpture to raise awareness of knife crime throughout the UK.



## PARTNERS & SUPPORT

None of this would have been possible without the support of the following people:

British Ironwork Centre  
Drop Zone Youth  
Projects  
South Cumbria PRU  
Police  
NHS  
Nwas  
FYWP

Cumbria County Council  
Barrow Borough Council  
Forum 28  
D.Turners & Sons

## NATIONAL UK ANTI VIOLENCE TOUR



4th January - 31st  
January 2022  
Duke Street  
Barrow-in-Furness

**SAVE A LIFE**   
[SURRENDERYOURKNIFE.CO.UK](http://SURRENDERYOURKNIFE.CO.UK)

# EDUCATION

In May 2021, after concerns about increased knife incidents in the area, South Cumbria Pru and Drop Zone Youth Projects had a conversation about what we could do in terms of educating young people around knife crime.

Within a few weeks we had planned and written a 6 week pilot project including our local child Centred Policing Team, the NHS, a local teacher and youth workers. We ran the project in Furness Academy, it was very different, very interactive and very powerful. Due to the success of this we have delivered now in four local secondary schools and have adapted the project for our local primary's. Hosting the Knife Angel was a natural progression of this project and we are continuing to develop and build on this, increasing our reach and education in our communities. For further info contact Drop Zone 01229812888.



## WILL THIS ATTRACT KNIFE CRIME IN OUR AREA?

Although we hear most about the incidents in Manchester, London and other cities, knife crime and violence in it's wider form is an ongoing issue that must be addressed.

By hosting the Knife Angel, we are showing that we recognise this. The sculpture also stands as a memorial to young lives lost and gives us chance to reflect upon the grief that can impact families, communities and the wider circle.

## WHO IS THE KNIFE ANGEL TARGETED AT?

The Knife Angel should resonate with all of us, as we listen to daily news reports about knife crime and lives lost. It hopes to raise awareness in communities it visits by providing a focal point, to question the senseless deaths and loss of lives and also support the police, schools and other organisational education programs.

## Why is the Knife Angel in Barrow?

This is the first time for the Knife Angel to visit Cumbria. Spending four weeks in Carlisle then heading to Barrow for January 2022. The Knife Angel is slowly touring the UK in a bid to raise awareness of the knife crime issues affecting communities, families and individuals. It is also here to highlight education and prevention initiatives taking place in schools and youth organisations across Cumbria. The Angel also recognises those whose lives have been affected by knife crime and acts of violence and acts as a memorial for bereaved families. The Angel will be situated in front of Barrow Town Hall on Duke Street in front of Forum 28.

